

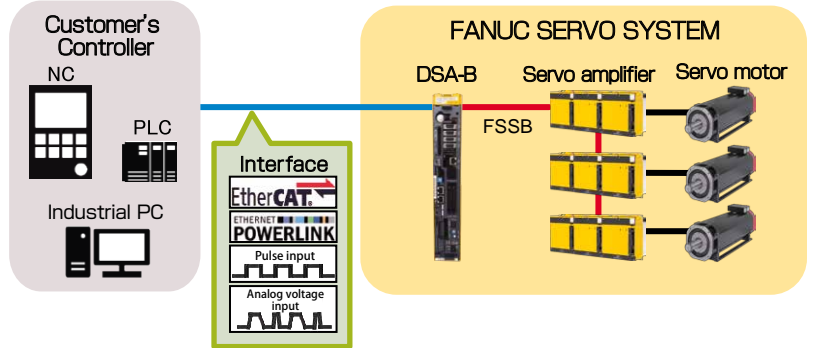
FANUC Digital Servo Adapter-MODEL B

FANUC Digital Servo Adapter-MODEL B (DSA-B) is an adapter for using FANUC servo motors by customer's controller.

- Customer's original technology can be used effectively.
- Interface matched to the controller can be selected.
- All line-up of FANUC servo motors are available.

Examples:

Injection molding machine, Press machine, Die cushion, Press brake, Carrier machine, Testing machine, etc



(1) EtherCAT® is a registered trademark and patented network technology, licensed by Beckhoff Automation GmbH, Germany.
 (2) Ethernet POWERLINK is a technology licensed by B&R Industry Automation GmbH, Austria

Interface



○ : Available, - : Not Available

Interface		EtherCAT	POWERLINK	Pulse	Analog voltage
Command method	Position	○	○	○	-
	Velocity	○	○	-	○
	Torque	○	○	-	○
Maximum servo number	Windings (*1)	1	8	4	4
		2	8 (*2)		
		4	4 (*2)		
Maximum spindle number		2	-	-	-
Tandem control (*3)		○	○	○	○
Pressure control		○	○	-	-

(*1) A large servo motor of FANUC is controlled by multiple windings and amplifiers.
 (*2) In case of using spindle motor, maximum servo number is 6 (2 windings) or 2 (4 windings).
 (*3) A single axis can be driven by multiple motors. So it can get large torque.

Motors and amplifiers

Promoting High-Speed, High-Precision, Compact Size and High-Efficiency for Industrial Machines

- **Wide range line-up**
Servo motor, linear motor and synchronous built-in servo motor with wide output range from small to large are lined-up, these can support to various industrial machines. Various models with either 200V input or 400V input are available, and it is possible to select these models flexibly according to the input voltage of the delivery area.
- **Compact size**
Downsizing of motor and amplifier is achieved by optimum design, so that contributes to downsize industrial machine.
- **Energy saving**
Energy saving is achieved by the latest high efficiency power devices and power source regeneration.
- **Control technology**
High stability is achieved by tandem control that prevents interference between driving of multiple motors.

Алматы (7273)495-231
Ангарск (3955)60-70-56
Архангельск (8182)63-90-72
Астрахань (8512)99-46-04
Барнаул (3852)73-04-60
Белгород (4722)40-23-64
Благовещенск (4162)22-76-07
Брянск (4832)59-03-52
Владивосток (423)249-28-31
Владикавказ (8672)28-90-48
Владимир (4922)49-43-18
Волгоград (844)278-03-48
Вологда (8172)26-41-59
Воронеж (473)204-51-73
Екатеринбург (343)384-55-89

Иваново (4932)77-34-06
Ижевск (3412)26-03-58
Иркутск (395)279-98-46
Казань (843)206-01-48
Калининград (4012)72-03-81
Калуга (4842)92-23-67
Кемерово (3842)65-04-62
Киров (8332)68-02-04
Колмна (4966)23-41-49
Кострома (4942)77-07-48
Краснодар (861)203-40-90
Красноярск (391)204-63-61
Курск (4712)77-13-04
Курган (3522)50-90-47
Липецк (4742)52-20-81
Россия +7(495)268-04-70

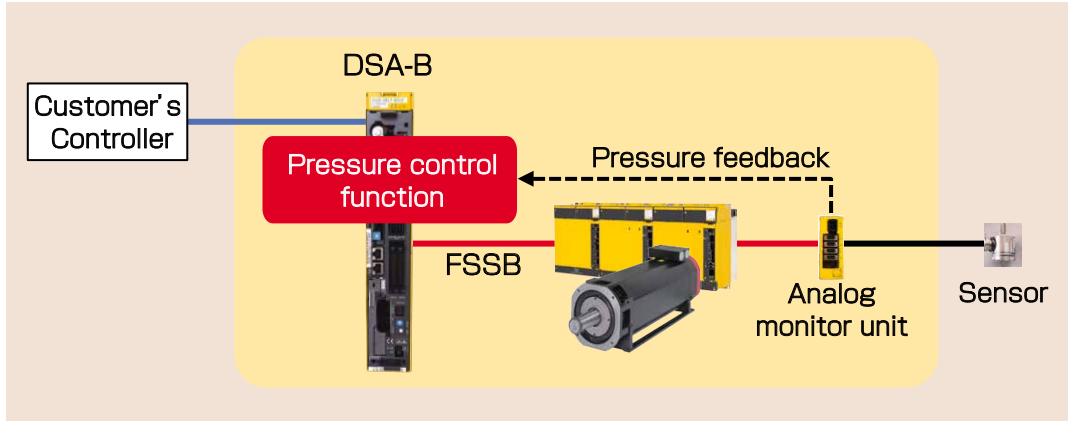
Магнитогорск (3519)55-03-13
Москва (495)268-04-70
Мурманск (8152)59-64-93
Набережные Челны (8552)20-53-41
Нижний Новгород (831)429-08-12
Новокузнецк (3843)20-46-81
Ноябрьск (3496)41-32-12
Новосибирск (383)227-86-73
Омск (3812)21-46-40
Орел (4862)44-53-42
Оренбург (3532)37-68-04
Пенза (8412)22-31-16
Петрозаводск (8142)55-98-37
Псков (8112)59-10-37
Пермь (342)205-81-47
Казахстан +7(7172)727-132

Ростов-на-Дону (863)308-18-15
Рязань (4912)46-61-64
Самара (846)206-03-16
Санкт-Петербург (812)309-46-40
Саратов (845)249-38-78
Севастополь (8692)22-31-93
Саранск (8342)22-96-24
Симферополь (3652)67-13-56
Смоленск (4812)29-41-54
Сочи (862)225-72-31
Ставрополь (8652)20-65-13
Сургут (3462)77-98-35
Сыктывкар (8212)25-95-17
Тамбов (4752)50-40-97
Тверь (4822)63-31-35
Киргизия +996(312)96-26-47

Тольятти (8482)63-91-07
Томск (3822)98-41-53
Тула (4872)33-79-87
Тюмень (3452)66-21-18
Ульяновск (8422)24-23-59
Улан-Удэ (3012)59-97-51
Уфа (347)229-48-12
Хабаровск (4212)92-98-04
Чебоксары (8352)28-53-07
Челябинск (351)202-03-61
Череповец (8202)49-02-64
Чита (3022)38-34-83
Якутск (4112)23-90-97
Ярославль (4852)69-52-93

High response pressure control

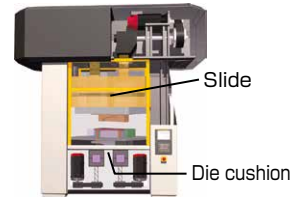
- Position control (or velocity control) and pressure control are smoothly switched by the pressure control function inside DSA.
- By using this function, stable pressure control without delay can be realized.



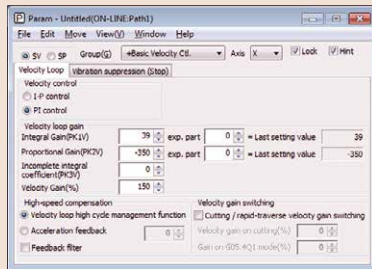
Easy to use servo tuning tool

FANUC SERVO GUIDE

- This is the integrated tuning tool for parameter setting and data measurement of servo axes.
- This tool enables to confirm the motion of motors by the waveform. It is useful for tuning and trouble shooting for industrial machines.

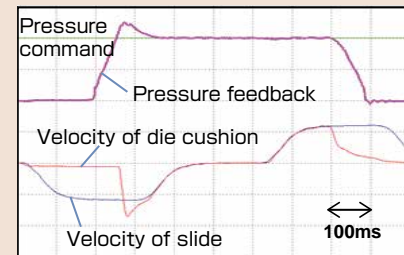


Example of parameter setting display



SERVO GUIDE

Example of motion waveform of press machine



Excellent Maintenance Services

FANUC service team delivers customer trust and confidence based on direction of service "Maximizing Uptime", "Global Service" and "Lifetime maintenance".

Service First

Conforming to the spirit of "Service First", FANUC provides lifetime maintenance to its products for as long as they are used by customers, through more than 260 service locations supporting more than 100 countries and regions throughout the world.

Maximizing Uptime



Global Service

Lifetime Maintenance

Алматы (7273)495-231
Ангарск (3955)60-70-56
Архангельск (8182)63-90-72
Астрахань (8512)99-46-04
Барнаул (3852)73-04-60
Белгород (4722)40-23-64
Благовещенск (4162)22-76-07
Брянск (4832)59-03-52
Владивосток (423)249-28-31
Владикавказ (8672)28-90-48
Владимир (4922)49-43-18
Волгоград (844)278-03-48
Вологда (8172)26-41-59
Воронеж (473)204-51-73
Екатеринбург (343)384-55-89

Иваново (4932)77-34-06
Ижевск (3412)26-03-58
Иркутск (395)279-98-46
Казань (843)206-01-48
Калининград (4012)72-03-81
Калуга (4842)92-23-67
Кемерово (3842)65-04-62
Киров (8332)68-02-04
Коломна (4966)23-41-49
Кострома (4942)77-07-48
Краснодар (861)203-40-90
Красноярск (391)204-63-61
Курск (4712)77-13-04
Курган (3522)50-90-47
Липецк (4742)52-20-81
Россия +7(495)268-04-70

Магнитогорск (3519)55-03-13
Москва (495)268-04-70
Мурманск (8152)59-64-93
Набережные Челны (8552)20-53-41
Нижний Новгород (831)429-08-12
Новокузнецк (3843)20-46-81
Новосибирск (383)227-86-73
Омск (3812)21-46-40
Орел (4862)44-53-42
Оренбург (3532)37-68-04
Пенза (8412)22-31-16
Петрозаводск (8142)55-98-37
Пермь (342)205-81-47
Казахстан +7(7172)727-132

Ростов-на-Дону (863)308-18-15
Рязань (4912)46-61-64
Самара (846)206-03-16
Санкт-Петербург (812)309-46-40
Саратов (845)249-38-78
Севастополь (8692)22-31-93
Саранск (8342)22-96-24
Симферополь (3652)67-13-56
Смоленск (4812)29-41-54
Сочи (862)225-72-31
Ставрополь (8652)20-65-13
Сургут (3462)77-98-35
Сыктывкар (8212)25-95-17
Тамбов (4752)50-40-97
Тверь (4822)63-31-35
Киргизия +996(312)96-26-47

Тольятти (8482)63-91-07
Томск (3822)98-41-53
Тула (4872)33-79-87
Тюмень (3452)66-21-18
Ульяновск (8422)24-23-59
Улан-Удэ (3012)59-97-51
Уфа (347)229-48-12
Хабаровск (4212)92-98-04
Чебоксары (8352)28-53-07
Челябинск (351)202-03-61
Череповец (8202)49-02-64
Чита (3022)38-34-83
Якутск (4112)23-90-97
Ярославль (4852)69-52-93

<https://fanuc.nt-rt.ru/> || fcu@nt-rt.ru